



The following is a summary of strategic integrated transport projects directed, managed or supported by current JzTI personnel.*

Holdfast Bay Integrated Transport Strategy - Holdfast Bay SA

The City of Holdfast Bay has an idyllic setting along the foreshore between Adelaide and Gulf St Vincent. It encompasses the tourism centre of Glenelg as well as many natural and cultural attractions, and constitutes a major residential area within easy reach of Adelaide by tram, train or highway. The demands on its transport network have expanded in recent years owing to increasing population and tourism/commercial activity, necessitating a coordinated transport strategy to ensure that future travel demands can be absorbed without sacrificing the City’s natural character and quality of life. Recommendations included public transport upgrades, walking/cycling enhancements, traffic calming initiatives, and strategic reallocation of road space.



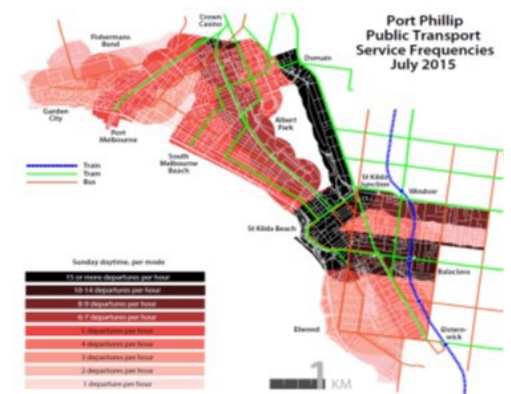
Box Hill Integrated Transport Strategy - Box Hill VIC



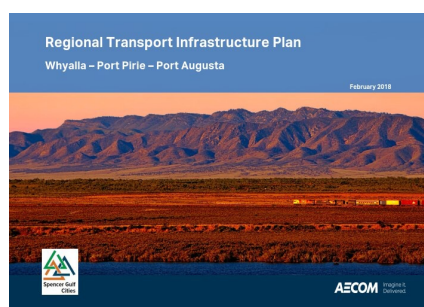
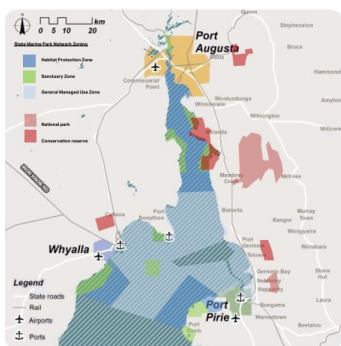
The Box Hill ITS takes a holistic approach to addressing the transport challenges of this rapidly densifying Melbourne activity centre. Emphasised within the strategy are walking and cycling enhancements, upgrade of the rail/bus interchange in the town centre, and re- envisioning of streets and intersections to better support prioritised active and public transport movements. The process of developing the ITS included stakeholder and public engagement, design workshops, presentations to Council members, and coordination with Council staff to develop a vision and action plan reflective of and responsive to the values and priorities of the community.

City of Port Philip ITS Discussion Paper - Melbourne VIC

As the City of Port Philip is facing considerable growth pressures with an ongoing influx of population into inner Melbourne, the aim of this ITS was to ensure that both existing and future residents could continue to be provided with sufficient levels of mobility well into the future, along with a greater breadth of viable travel options to, through and within the City. It also prioritised supporting the continued liveability of Port Philip’s many distinct neighbourhoods by managing the growth in localised car traffic through establishment of traffic calming target areas in combination with mode-shift initiatives aimed at increasing the levels of pedestrian and cyclist participation for day-to-day travel.



Regional Transport Infrastructure Plan - Upper Spencer Gulf SA



The purpose of this strategy was to develop a coordinated transport infrastructure plan for the Upper Spencer Gulf region of South Australia, with an emphasis on safe and efficient freight movements through and between the cities of Port Augusta, Port Pirie and Whyalla. The plan was based around an organising framework consisting of three core themes: sustainability, innovation and liveability. The report identified and assessed current and proposed transport infrastructure projects for the region for each transport mode, including road, rail, airport and seaport, culminating in a prioritisation framework intended as a guide for the staging and funding of future projects.

*includes experience with AECOM prior to establishment of JzTI Australia